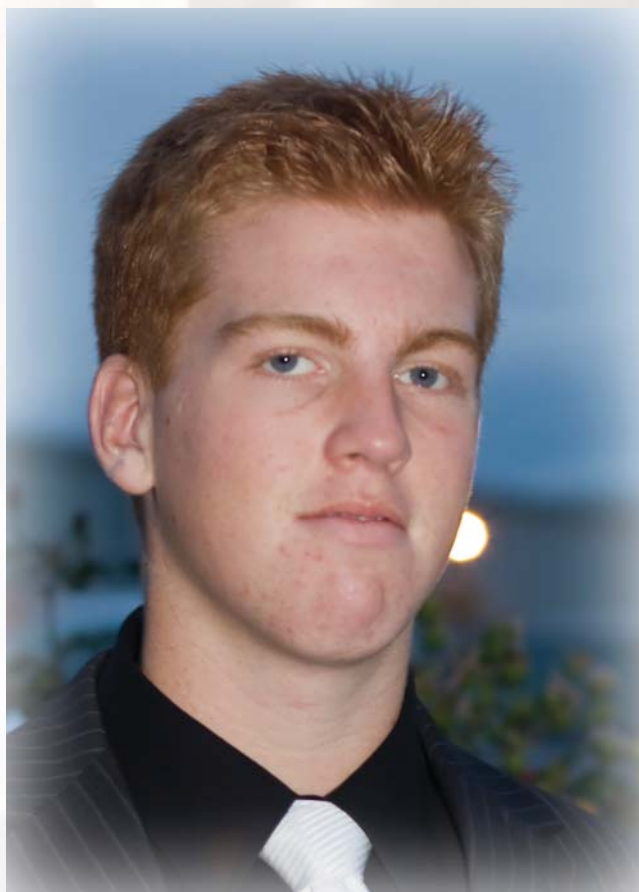


**D**

# #14 - Connor Goodman



**Position:** Defense

**YOB:** 1994

**Shoots:** Left

**Height:** 6'2"

**Weight:** 200 lbs.



Team / Year	GP	G	A	PTS.	PIMs	+ / -	P/G
09-10 Cloverdale Midget C	45	12	20	32	6	25	0.71
08-09 Cloverdale Bantam B2	N/A	-	-	-	-	-	-

Coach's Comments:

"Connor is a powerful stay at home d-man that keeps the front of the net clear. Reads the play very well and has an accurate hard shot. Very coachable and versatile."

